

Maintenance

It is recommended that the soil injector is kept clean and lubricated in order to keep your soil injector working trouble-free. Following these simple steps will ensure years of operation without problems or difficulties.

1. After finishing injections for the day, pump the injector several times to remove any remaining chemical from the injector. Be sure to dispose of the chemical in accordance with label instructions.
2. Put several drops of a medium weight oil into the access hole on the side of the Sleeve (#12).
3. Using a rag or paper towel, apply oil to the injector probe and tip.

Service Tips

- Applying anti-seize compound to threads when you assemble any part of the injector will ease disassembly should it becomes necessary in the future.
- O-Rings should always have a light coat of grease or petroleum jelly.
- The application of a medium weight oil on moving parts, such as the Piston Cylinder (#23), should keep these parts moving freely.
- The probe and tip may rust when exposed to moisture. While the operation of the unit is not affected, oiling the probe and tip or spraying with a lubricant will reduce the formation of rust.
- Additional tips and updates will be posted as they become available on www.ezject.com.



For additional service assistance,
contact your distributor or call us toll free at:
1-888-395-6732 • www.ezject.com

EZ-Ject Inc.

P.O. Box 34645 - Omaha, NE 68134-0645
10168 L Street - Omaha, NE 68127-1120

EZ-JECT™ SOIL INJECTOR™ LITE

Instruction Guide



Adjusting the foot plate

1. Loosen the foot plate screw (#16) using a wrench if necessary.
2. Move the plate to set the desired depth along the probe (#14).
3. Align the foot plate screw with one of the detents on the probe.
4. Secure the foot plate by tightening the foot plate screw. The screw should be tight enough to prevent movement. Do not over tighten.

Filling the tank

1. Press the soil probe vertically and securely into the soil so it will remain there without assistance.
2. Remove the hitch pin (#22) and pivot the handle (#1) out of the way.
3. Remove the tank cap (#21).
4. Fill and replace cap.
5. Pivot the handle back into place and replace the hitch pin.

Always read and follow chemical manufacturers label instructions while using this injector. Personal protective equipment (PPE) should be used in accordance with applicable Safety Data Sheets.

Note: The injector has been designed to deliver 15 ml (1/2 oz.) of liquid per stroke. 7.5 (1/4 oz.) option available

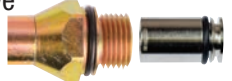
Replacing the probe tip/ Accessing the probe tip check valve

1. Using an appropriate wrench, and while holding the foot plate (#15) stationary, unscrew the probe tip (#17) by turning it in the counter-clockwise direction.
2. Remove the check valve (#8) from the probe tip. Placing the blade of a small screwdriver under the lip of the check valve may assist in removing the valve.
3. Replace the tip and/or check valve as needed. The check valve is inserted with the O-ring toward the outside of the tip. Before inserting the check valve into the tip, coat the outside of the valve and o-ring with a light grease or petroleum jelly.
4. Replace the tip by screwing it clockwise into the probe. The use of anti-seize compound on the tip threads is recommended.



Replacing the probe O-Ring/ Accessing the probe tip check valve

1. Using an appropriate wrench, and while holding the piston cylinder (#23) stationary, unscrew the probe from the cylinder by turning it in the counter-clockwise direction.
2. Remove the check valve (#24) from the probe. Placing the blade of a small screwdriver under the lip of the check valve may assist in removing the valve.
3. Replace the O-Ring or check valve as needed. The check valve is inserted with the O-Ring toward the outside of the probe. Before inserting the check valve into the probe bushing, coat the outside of the valve and o-ring with a light grease or petroleum jelly. Note that this check valve is not like the other two valves used. This valve has a SMALL hole on the end.
4. Before screwing the probe clockwise into the piston cylinder, coat the o-ring with a light grease or petroleum jelly. Also, use an anti-seize compound on the threads prior to assembly.



Replacing the piston O-Ring/
Accessing the piston check valve

1. Remove the sleeve (#12) from the tank (#20) by turning the sleeve in the counter-clockwise direction.
2. Unscrew the piston (#9) from the tank.
3. Remove piston backer rings (#11) and the piston O-Ring (#10) from the piston.
4. Place a new backer ring (#11), a new piston o-ring (#10) and a new backer ring (#11) onto the piston.
5. Using a light grease or petroleum jelly, lubricate the O-Ring.
6. Screw the piston (#9) onto the tank.
7. Reattach the sleeve to the body by screwing it in the clockwise direction. Use an anti-seize compound on the threads prior to reassembly.

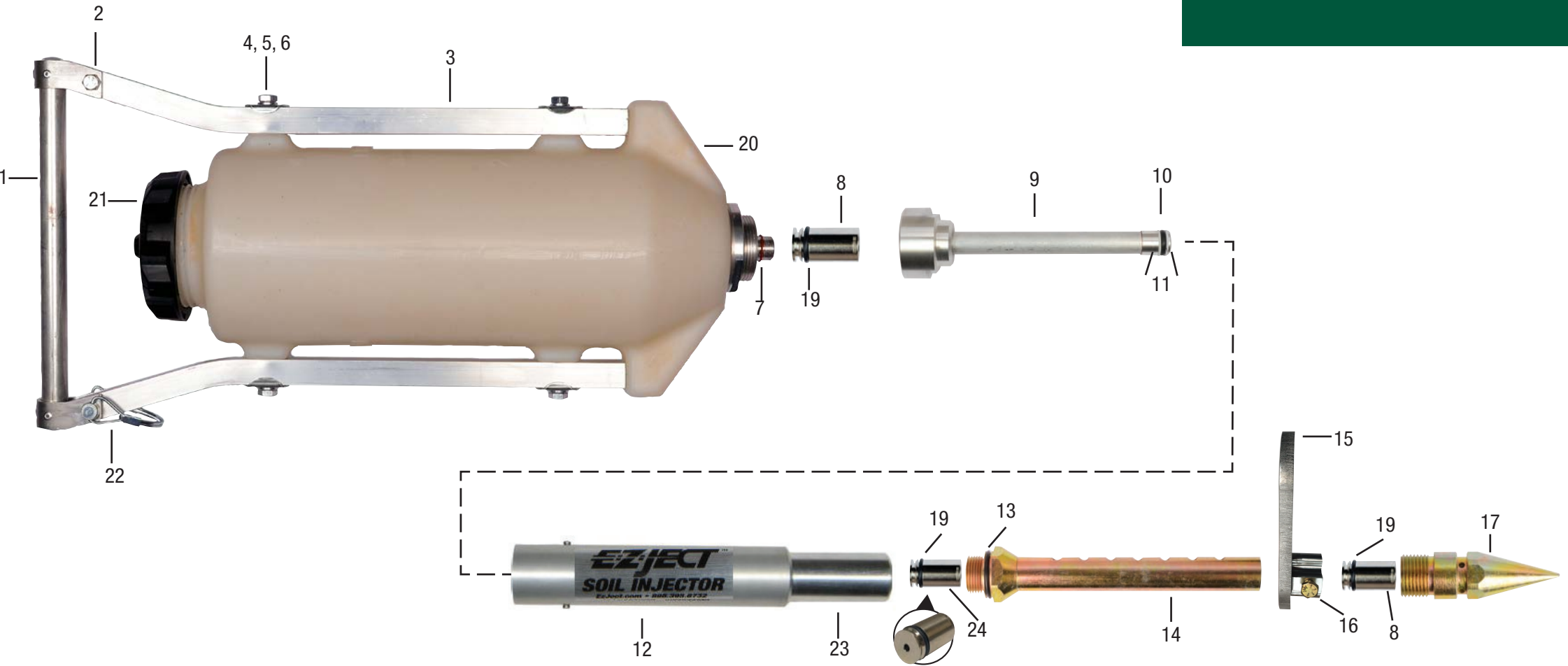


Accessing the piston check valve

1. Follow Steps 1-4 under *Replacing the piston O-Rings*.
2. Remove the check valve. Placing the blade of a small screwdriver into the slot on the side of the check valve may assist in removing the valve.
3. Replace with a new check valve making sure you insert it O-Ring first into the coupler. Before inserting the check valve into the coupling, coat the outside of the valve and o-ring with a light grease or petroleum jelly.
4. Screw the piston (#9) onto the tank.
5. Reattach the sleeve to the body by screwing it in the clockwise direction. Use an anti-seize compound on the threads prior to reassembly.

DO NOT ATTEMPT TO DISSEMBLE THE CYLINDER ASSEMBLY (#12)! It is under spring tension and may result in bodily harm if tampered with.

EZ-Ject™ Soil Injector Parts Chart



Ref	Part No.	Description
1	S201	Handle - Pivot
2	S202	Handle - Pivot Screw and Nut
3	S203	Handle - Side (2 per injector)
4	S204	Handle - Side Bolt (4 per injector)
5	S205	Handle - Side Lock Washer (4 per injector)
6	S206	Handle - Side Formed Washer (4 per injector)
7	S107	Coupler O-Ring
8	S108	Check Valve (2 per injector)
9	S109	Piston (Includes 1-#10, 2-#11)
10	S110	Piston O-Ring

Ref	Part No.	Description
11	S111	Piston Backer Ring (2 per injector)
12	S112	Sleeve
23	†	Piston Cylinder
13	S113	Probe O-Ring
14	S114	Probe (Includes #13)
15	S215	Foot Plate (Includes #16)
16	S116	Foot Plate Screw
17	S117	Tip
18	S118	Coupler Spacer
19	S119	Check Valve O-Ring

Ref	Part No.	Description
20	S521	Tank Complete
21	S501	Tank Cap
22	S103	Hitch Pin
*	SK01	Seal Kit (Includes: #7, #10, 2-#11, #13, 3-#19)
24	S120	Check Valve (Small Hole) (Includes #19)

* Not Shown † Not Available Separately

