

# WARRANTY

Industry Leading 1 Year  
Limited Warranty



A Division of Houser's Plant Health Care



Thank you for purchasing a PHC Systems Product.

Our goal is to make sure you are completely satisfied with your purchase.

We design our products to the highest quality standard to deliver long lasting performance... and stand behind our products with confidence.

As the original purchaser, PHC Systems guarantees that your IPM Caddie will be free from defects in material and workmanship from one year from the date of the original purchase.

Visit us at [PHC-Systems.com](http://PHC-Systems.com) for valuable information on maximizing the profit potential of your new IPM Caddie.

Manufactured by:



A Division of Houser's Plant Health Care

(717) 403-7093

[www.PHC-Systems.com](http://www.PHC-Systems.com)

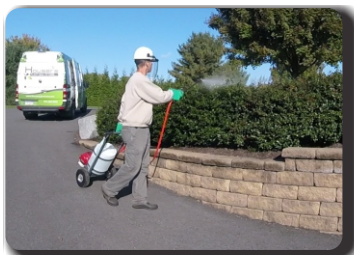
# IPM Caddie™

## Model CAD-5



Products Designed for PHC professionals  
by those who know PHC

**Thank you** for making an investment in the IPM Caddie, a multi-functional unit that will give you many years of profitable service.



### Shrub Spraying

Insecticides, Fungicides, Miticides, Foliar Fertilizers, Beneficial Biology, Plant Growth Regulators, Animal Repellants, and Anti-Desiccants



### Small Tree Spraying (up to 30 feet)

Insecticides, Fungicides, Miticides, Foliar Fertilizers, and Beneficial Biology



### Systemic Bark Spraying

Systemic Insecticides, and Systemic Phosphorus



### Systemic Soil Injections

Systemic Insecticides, and Plant Growth Regulators



### Deep Root Injections

Fertilizers, Soil Conditioners, and Beneficial Biology

## Accessories:



### Tool Pouch and Mounting Bracket

Add a convenient place to hold all your stuff... with this bolt-on-ready multi-pocket pouch.

### HTI Bracket

Add brackets to hold the **HTI Soil Injector** from Rainbow and you've got the perfectly matched pair of PHC tools designed to travel and work together to increase your efficiency for systemic soil injections.



## PHC Systems:

Bob's extensive PHC experience spans more than 30 years - a background that created the benchmark for his innovative, yet practical equipment designs.

As a PHC professional, you will increase your application efficiency with an investment in a PHC Systems product.



## Do's

Flush with fresh water at the end of every daily use.

Carry extra tanks for ease of switching different material

Keep the mix rate card and measuring spoons handy to help with proper mixing

Reduce throttle to the idle position to switch application tools without turning off the engine.

Squeeze trigger on application the tool to release pressure before removing the application tool.

Check the pressure rating for the tool you are using before setting the pressure.



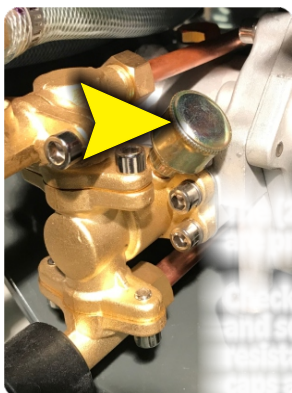
## Don'ts

When tank becomes empty, DO NOT continue to spray, air can build up in the system and temporarily effect pump operation.

DO NOT use suspension type fertilizers.

DO NOT exceed 450 psi.

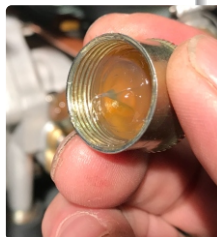
## Maintenance:



**Engine:** See Honda owners manual for engine maintenance

**Pump:** The oil in the pump should be changed every year.

The(2) caps onthe pump are pre-filled with grease.  
Check these caps every month - and screw them down until slight resistance is felt. Refill grease caps as needed with Lithium based grease.



**End of Day:** Flush Caddie with fresh water after each daily use.

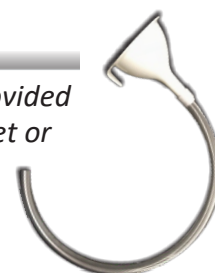
## Unpacking:

Remove the Caddie and accessories from the shipping box.



## Before Starting:

Use the funnel provided and a 17mm socket or wrench.



1. Fill Engine with 30W oil.  
Engine will take 3oz (87ml), approx.



2. Fill pump with 30W oil  
Pump will take 2 & 1/4oz (65ml), approx.

Pump oil level is the halfway point of the **Red Dot**. (sight glass)

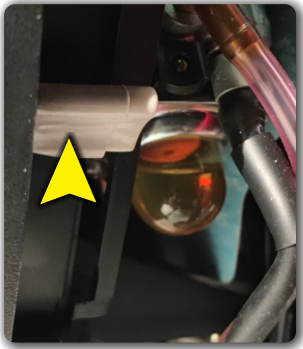


3. Fill with regular fuel (not mixed fuel)

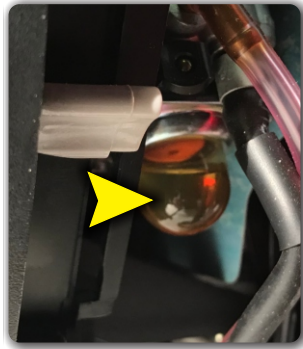


## Starting the Engine:

Before the First Start,  
**ADD OIL** to the Engine



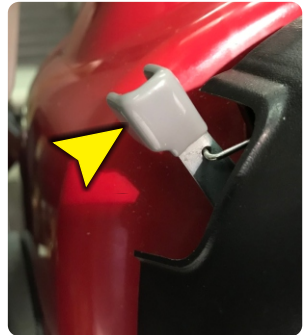
1. If the engine is cold, move the choke lever **UP**, to the closed position.



2. Press the priming bulb 3-4 times. *(generally only if the engine is cold)*



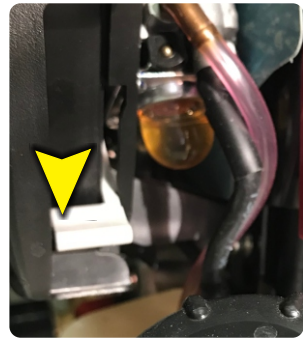
3. Turn switch to ON position



4. Move throttle control **UP** to the idle position

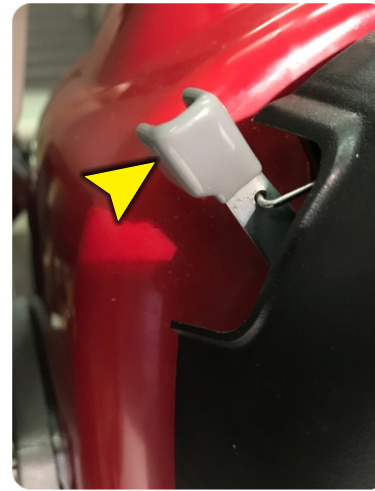


5. Pull start grip until the engine starts



6. When engine starts, move choke **DOWN** to the open position.

## Operating the Caddie:

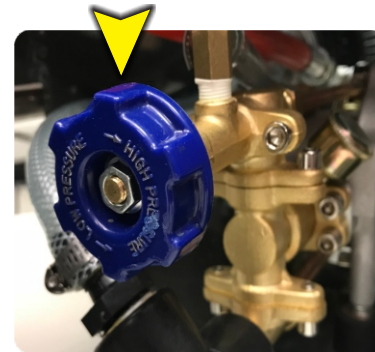


Always start the engine with the throttle moved **UP** to the idle position.  
*(at the idle position the pump is not engaged)*

Make sure the spray hose and spray wand (or other application tool) is attached.

Fill tank with water to desired level.

### Pressure Adjust Knob



Once engine is started, adjust throttle and pressure to desired levels.

The engine does not need to be at full throttle and the pressure does not need to exceed 450psi.

Higher than 450psi pressure **DOES NOT** increase spray height or spray volume!

If pressure fails to build, **DO NOT** turn pressure regulator higher, air may be in the hose and pump. Squeeze the trigger on the spray wand to release the air and the pressure will increase to the set position.

When the pressure and throttle are set to your desired levels, you can begin application.