

**INNOVATIVE  
WORKFLOW**



## **APEX 148/172**

Our **plant health care sprayers** are designed to **maximize workflow** and **create standardization**.

The APEX sprayers have a user-friendly layout which includes a well-labeled APEX workbench area with manifolds, induction system, motor and pump controls, hose recirculation, and PHC Box™. These features are on the passenger side of the truck to maximize workflow. The “workbench” design helps to create standardization which will result in **your techs** being **safer**, **more efficient**, and **more consistent** with their applications.

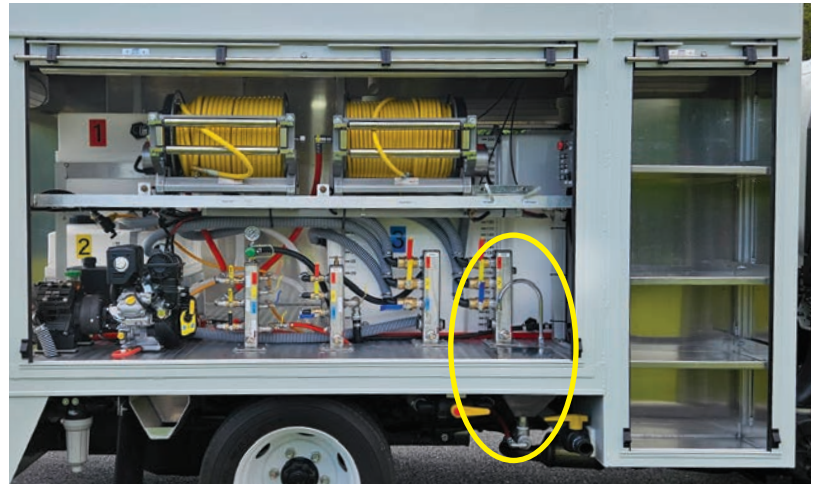
The APEX sprayer has plenty of storage for all your products, measuring tools, information guides and smaller application equipment. The large storage area (PHC Box™) is conveniently located next to the workbench.

“The quality of any PHC application is limited by the quality of the workflow doing it.” Let us help you improve your PHC workflow!



## STANDARD COMPONENTS

- Fiberglass and Plastic Tanks
- (3) Udor Pump Options
- (2) Hannay Hose Reels
- (2) Hoses - 1/2", 300' and 3/8", 400'
- Stainless Steel Manifolds
- PHC Box™
- Backpack Fill System
- Induction System
- Vanguard & Honda Engines
- (4) Roll up Doors
- Air Gap Fill System
- Strobe Lights
- Inverter for Charging Small Batteries



OUR APEX WORKBENCH AREA: INCLUDING EDUCTOR TANK TO THE IMMEDIATE LEFT OF THE LARGE STORAGE AREA (PHC BOX™) WHICH IS FOR PRODUCT STORAGE, MEASURING TOOLS AND INFO GUIDES

## OPTIONS

- Backup Camera
- 5/8", 300' Hose
- Trailer Hitch
- Drivers Side Hose Reel
- Hand & Eye Wash Station
- Tool Brackets



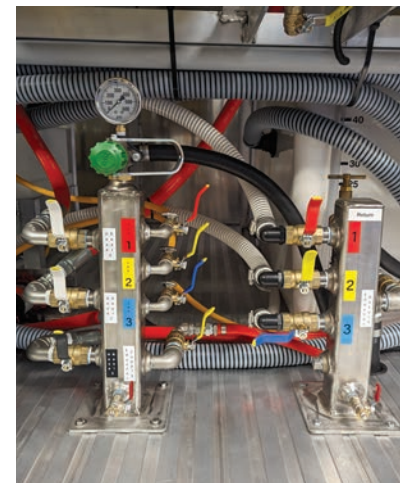
REAR ENTRY DOOR WITH SAFE, EASY ACCESS



REAR DROP DOWN AREA FOR EXTRA STORAGE

## CONFIGURATIONS

	APEX 148	APEX 172
<b>Cab Chassis</b>	Isuzu NPR HD 109" WB, Gas Engine	Isuzu NRR 132" WB, Gas Engine
<b>Body Length</b>	148"	172"
<b>GVW</b>	14,500 lbs	19,500 lbs
<b>Tank Capacity</b>	573 gal	773 gal
<b>Tank Configuration</b>	<u>300/100/80/58/35</u> 400 gal fiberglass split 300/100, 80 gal upright, 58 gal, 35 gal - OR - <u>400/80/58/35</u>	<u>400/200/80/58/35</u> 600 gal fiberglass split 400/200, 80 gal upright, 58 gal, 35 gal



WELL LABELED MANIFOLDS WITH VISUAL CONTROLS SHOW WHICH TANKS ARE IN USE



Jonestown, PA 17038



info@phc-systems.com  
www.phc-systems.com



(717) 403-7093